



MERRICK-KEMPER

INDUSTRIAL /// ARCHITECTURAL

BRYANT MERRICK, INDUSTRIAL SALES TEAM

Email: bryantm@merrick-kemper.com

Mobile: 502.718.0520

Fax: 502.448.4050

Office: 502.449.1234, x. 234

www.merrick-kemper.com

I. COMPANY RESOURCES

(Staff, Facilities, Affiliations, and Contact Information.)

II. PROJECTS OF NOTE

(Noteworthy project information & details.)

III. INDUSTRIAL SHEET METAL

(Fabrication of custom items, duct work, blow pipe, conveyors, breeches, hoods, steel fabrication, tank and vessel fabrication, hoppers, etc. Various materials and methods of welding.)

IV. METAL WALL PANELS

(Custom fabrication, installation, repair, or replacement.)

V. SLATE • TILE • METAL ROOFING

(Installation, repair, or replacement.)

VI. ARCHITECTURAL SHEET METAL

(Design, fabrication, installation, repair or replacement of guttering, downspouts, flashings, counter-flashings, coping caps, etc.)

I. COMPANY RESOURCES

STAFF

Most employees at Merrick-Kemper have been part of the Merrick team for many years. Everyone – in every department – makes a significant contribution to each project.

Our team's 200 years combined service and experience are available to you for estimating, purchasing, project managing, cost accounting, and design.

FACILITIES

Merrick-Kemper's dual facilities offer the following:

- Combined 52,000 square feet of shop fabrication floor with standard equipment, including:
 - a. High-Definition Plasma Auto Burning System.
 - b. Bending Roll machine.
 - c. Press Brakes.
 - d. Shears.
 - e. Variety of bending and forming equipment.
 - f. Boom Truck.
 - g. Fork Lifts.
 - h. And more...
- Warehouse with loading docks, protected by an electronic security system.
- Ability to handle large scale items with overhead cranes and fork trucks.
- Six acres of graded, graveled yard for outside storage.

FINANCIAL

Merrick-Kemper has the financial strength to execute projects in the multi-million dollar range. Bonding via Garret-Stotz Company; primary banking with Stock Yards Bank & Trust Co. of Louisville.

AFFILIATIONS

SMACNA: Sheet Metal and Air-Conditioning Contractors
National Association
KSMCA: Kentucky Sheet Metal Contractors Association
BEL: Builders Exchange of Louisville
KCUC: Kentuckiana Construction Users Council

Contact Bryant Merrick for all of your industrial sheet metal needs.

BRYANT MERRICK, INDUSTRIAL SALES TEAM

E: bryantm@merrick-kemper.com
P: 502-449-1234
C: 502-718-0520
F: 502-448-4050
W: www.merrick-kemper.com

II. PROJECTS OF NOTE

CUSTOMER	JOB / DESCRIPTION	CONTRACT
Pace Construction <i>2019</i>	MSD Rowan Pump Station Corten & Perforated Aluminum Panels <i>Fabricate & Install</i>	\$1,200,000
The Boldt Company <i>2018</i>	GM Process Ventilation Fuel Fill & Final Line <i>Fabricate & Install</i>	\$856,051.00
Dow Chemical <i>2021</i>	Maintenance & Sheet Metal Projects <i>Fabricate & Install</i>	\$500,000
Sazerac Distillers <i>2020</i>	Fermenter Tank Repairs <i>Renovation</i>	\$338,914
Log Still Distillery <i>2021</i>	Mansion Sheet Metal & Roofing <i>Sheet Metal Fabrication & Install</i>	\$309,902
American Fuji Seal <i>2021</i>	Ductwork Project <i>Fabricate & Install</i>	\$284,850
Sazerac Distillers <i>2021</i>	Cooling Tower Rebuild <i>Renovation</i>	\$143,840
PQ Corporation <i>2020</i>	Tank Floor Replacement <i>Fabricate & Install</i>	\$118,000

INDUSTRIAL SHEET METAL



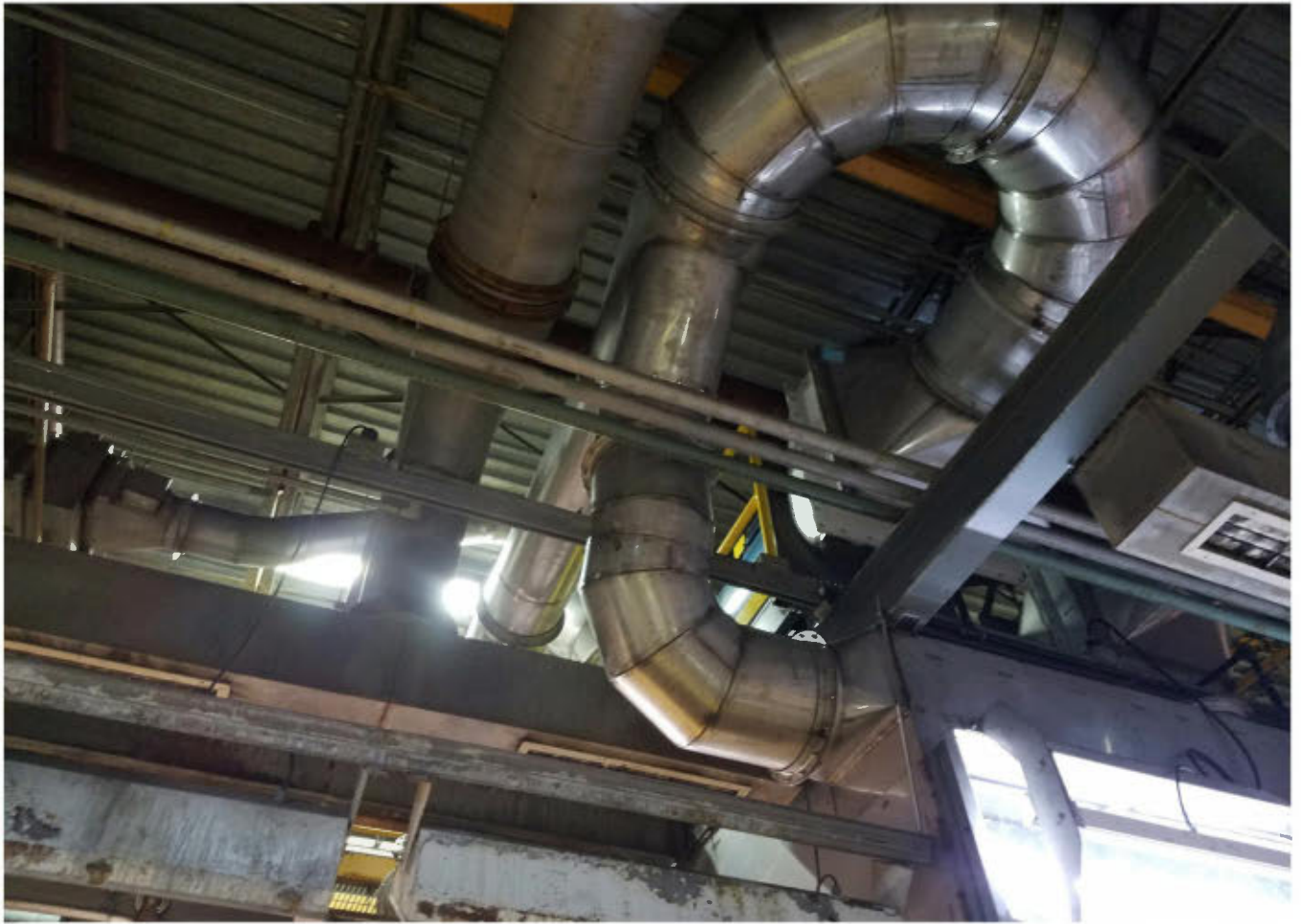




















METAL WALL PANELS







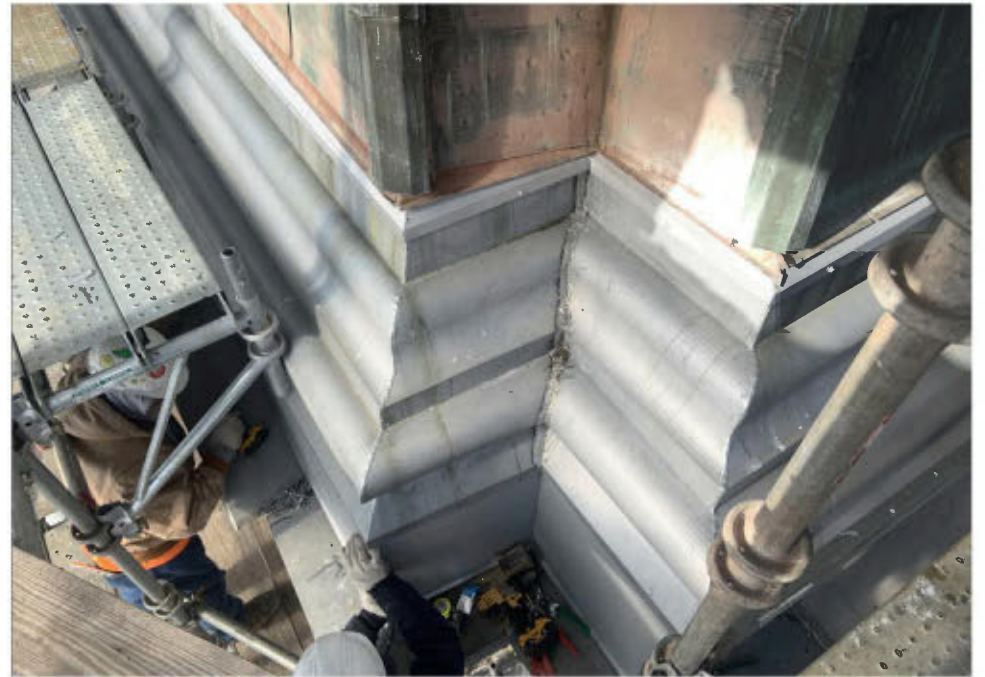
**ROOFING:
SLATE
TILE
METAL**





ARCHITECTURAL SHEET METAL





Since 1902, Merrick-Kemper has been a contractor that has served Louisville, southern Indiana, and numerous Kentucky counties. We are proud of our record that supports a history of excellent workmanship and service.

Merrick-Kemper welcomes this opportunity to help serve your needs, as they relate to industrial sheet metal work, custom fabrication, ventilation, and architectural sheet metal work.

